

## RRA-2021

### Miniature Reed Switch

#### Electrical Characteristics

Contact Form (ASA)		A
Contact material		Ru
Contact rating max.	W / VA	40
Switching current max.	A	2.0
Carry current max.	A	2.0
Switching voltage max.	VDC	230
	VAC	230
Breakdown voltage min.	VDC	400
Contact resistance (initial)	mΩ	150
Isolation resistance min.	Ω	10 <sup>11</sup>
Capacitance typ.	pF	0.2

#### Magnetical Characteristics

Pull in range available	AT	20-50
Drop out min.	AT	5
Test coil		002

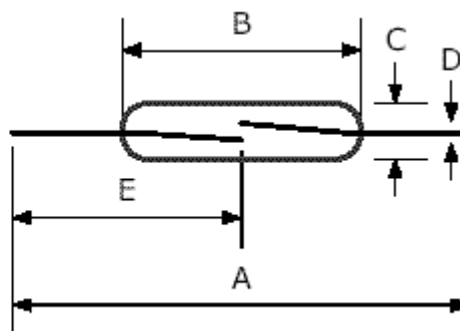
#### Operating Characteristics

Operate time max. (incl. bounce)	ms	1.6
Release time max.	ms	0.12
Switching frequency max.	Hz	500
Resonate frequency max.	Hz	2,000
Vibration (50-2000 Hz)	g	30
Shock (1 / 2 sin 11 ms)	g	50
Operating temperature	°C	-40 to +200

#### Dimensions

<b>A = Total length nom.</b>	57.0
<b>B = Glass length max.</b>	19.50
<b>C = Glass diameter max.</b>	2.60
<b>D = Wire diameter nom.</b>	0.60
<b>E = Gap location</b>	28.50

in mm



#### Technokey Company Ltd.

Unit 6-8, 26/F, Yen Sheng Centre,  
64 Hoi Yuen Road,  
Kwun Tong, Kln, Hong Kong.  
Web Site: <http://technokey.com>

Tel: (852) 2950 9818  
Fax: (852) 2950 0561  
Tel: 021-6443 9350, 6404 8811 (Shanghai Office)  
E-mail: [enquiry@technokey.com](mailto:enquiry@technokey.com)