

## PMC-5002

### High Power Reed Switch

#### Electrical Characteristics

Contact Form (ASA)		A
Contact material		Mo
Contact rating max.	W / VA	250
Switching current max.	A	5.0
Carry current max.	A	5.0
Switching voltage max.	VDC	250
	VAC	250
Breakdown voltage min.	VDC	700
Contact resistance (initial)	mΩ	300
Isolation resistance min.	Ω	10 <sup>9</sup>
Capacitance typ.	pF	1.0

#### Magnetical Characteristics

Pull in range available	AT	50-100
Drop out min.	AT	20
Test coil		050

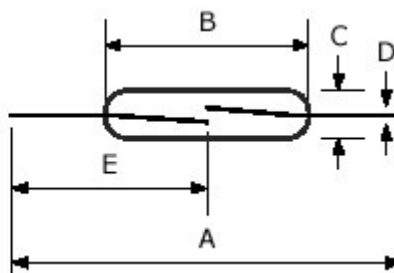
#### Operating Characteristics

Operate time max. (incl. bounce)	ms	2.0
Release time max.	ms	1.0
Switching frequency max.	Hz	5
Resonate frequency max.	Hz	700
Vibration (50-2000 Hz)	g	10
Shock (1 / 2 sin 11 ms)	g	50
Operating temperature	°C	-60 to +100

#### Dimensions

<b>A = Total length nom.</b>	80.00
<b>B = Glass length max.</b>	50.00
<b>C = Glass diameter max.</b>	5.40
<b>D = Wire diameter nom.</b>	1.50
<b>E = Gap location</b>	40.00

in mm



#### Technokey Company Ltd.

Unit 6-8, 26/F, Yen Sheng Centre,  
64 Hoi Yuen Road,  
Kwun Tong, Kln, Hong Kong.  
Web Site: <http://technokey.com>

Tel: (852) 2950 9818  
Fax: (852) 2950 0561  
Tel: 021-6443 9350, 6404 8811 (Sh)  
E-mail: [enquiry@technokey.com](mailto:enquiry@technokey.com)