

PMC-0701

Micro Miniature Reed Switch

Electrical Characteristics

Contact Form (ASA)		A
Contact material		Ru
Contact rating max.	W / VA	1
Switching current max.	A	0.1
Carry current max.	A	0.3
Switching voltage max.	VDC	24
	VAC	24
Breakdown voltage min.	VDC	150
Contact resistance (initial)	mΩ	200
Isolation resistance min.	Ω	10 ⁹
Capacitance typ.	pF	0.4

Magnetical Characteristics

Pull in range available	AT	10-30
Drop out min.	AT	4
Test coil		010

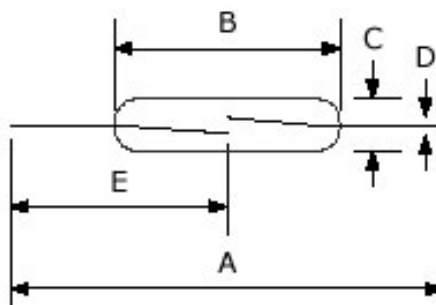
Operating Characteristics

Operate time max. (incl. bounce)	ms	0.3
Release time max.	ms	0.1
Switching frequency max.	Hz	400
Resonate frequency max.	Hz	12,000
Vibration (50-2000 Hz)	g	10
Shock (1 / 2 sin 11 ms)	g	50
Operating temperature	°C	-40 to +125

Dimensions

A = Total length nom.	41.80
B = Glass length max.	7.00
C = Glass diameter max.	1.80
D = Wire diameter nom.	0.42
E = Gap location	20.90

in mm



Approvals

UL

Technokey Company Ltd.

Unit 6-8, 26/F, Yen Sheng Centre,
64 Hoi Yuen Road,
Kwun Tong, Kln, Hong Kong.
Web Site: <http://technokey.com>

Tel: (852) 2950 9818
Fax: (852) 2950 0561
Tel: 021-6443 9350, 6404 8811 (Sh)
E-mail: enquiry@technokey.com