

## NL-126

### Miniature Reed Switch

#### Electrical Characteristics

Contact Form (ASA)		A
Contact material		Rh
Contact rating max.	W / VA	50
Switching current max.	A	1.5
Carry current max.	A	2.5
Switching voltage max.	VDC	200
	VAC	150
Breakdown voltage min.	VDC	300
Contact resistance (initial)	mΩ	100
Isolation resistance min.	Ω	10 <sup>12</sup>
Capacitance typ.	pF	0.3

#### Magnetical Characteristics

Pull in range available	AT	20-60
Drop out min.	AT	5
Test coil		560

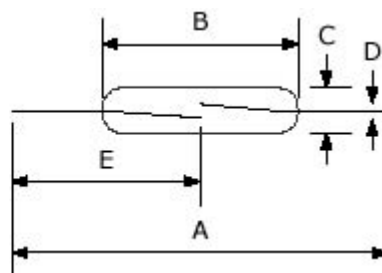
#### Operating Characteristics

Operate time max. (incl. bounce)	ms	0.8
Release time max.	ms	0.1
Switching frequency max.	Hz	300
Resonate frequency max.	Hz	2,500
Vibration (50-2000 Hz)	g	30
Shock (1 / 2 sin 11 ms)	g	100
Operating temperature	°C	-40 to +125

#### Dimensions

<b>A = Total length nom.</b>	54.00
<b>B = Glass length max.</b>	20.50
<b>C = Glass diameter max.</b>	2.50
<b>D = Wire diameter nom.</b>	0.70
<b>E = Gap location</b>	27.00

in mm



#### Technokey Company Ltd.

Unit 6-8, 26/F, Yen Sheng Centre,  
64 Hoi Yuen Road,  
Kwun Tong, Kln, Hong Kong.  
Web Site: <http://technokey.com>

Tel: (852) 2950 9818  
Fax: (852) 2950 0561  
Tel: 021-6443 9350, 6404 8811 (Sh)  
E-mail: [enquiry@technokey.com](mailto:enquiry@technokey.com)