

HSR-V207

High Power Reed Switch

Electrical Characteristics

Contact Form (ASA)		A
Contact material		W*
Contact rating max.	W / VA	200
Switching current max.	A	3.0
Carry current max.	A	5.0
Switching voltage max.	VDC	3,500
	VAC	3,500
Breakdown voltage min.	VDC	7,000
Contact resistance (initial)	mΩ	500
Isolation resistance min.	Ω	10 ¹⁰
Capacitance typ.	pF	1.0

*Minimum load for contact material W: 3 Watts !

Magnetical Characteristics

Pull in range available	AT	100-150
Drop out min.	AT	30
Test coil		093

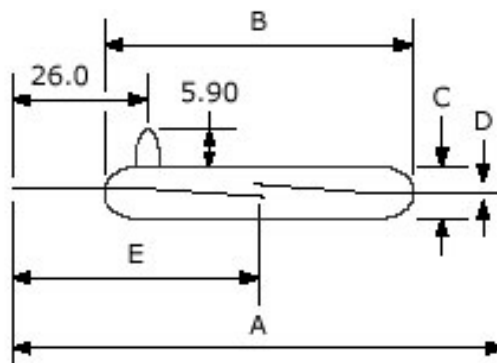
Operating Characteristics

Operate time max. (incl. bounce)	ms	4.0
Release time max.	ms	1.0
Switching frequency max.	Hz	50
Resonate frequency max.	Hz	300
Vibration (50-2000 Hz)	g	30
Shock (1 / 2 sin 11 ms)	g	50
Operating temperature	°C	-45 to +125

Dimensions

A = Total length nom.	82.00
B = Glass length max.	53.40
C = Glass diameter max.	5.40
D = Wire diameter nom.	0.6x2.5
E = Gap location	41.00

in mm



Technokey Company Ltd.

Unit 6-8, 26/F, Yen Sheng Centre,
64 Hoi Yuen Road,
Kwun Tong, Kln, Hong Kong.
Web Site: <http://technokey.com>

Tel: (852) 2950 9818
Fax: (852) 2950 0561
Tel: 021-6443 9350, 6404 8811 (Sh)
E-mail: enquiry@technokey.com