

DRA-2032

Standard Reed Switch

Electrical Characteristics

Contact Form (ASA)		A
Contact material		Ru
Contact rating max.	W / VA	100
Switching current max.	A	3.0
Carry current max.	A	3.5
Switching voltage max.	VDC	300
	VAC	240
Breakdown voltage min.	VDC	550
Contact resistance (initial)	mΩ	100
Isolation resistance min.	Ω	10 ¹⁰
Capacitance typ.	pF	0.5

Magnetical Characteristics

Pull in range available	AT	50-100
Drop out min.	AT	25
Test coil		001

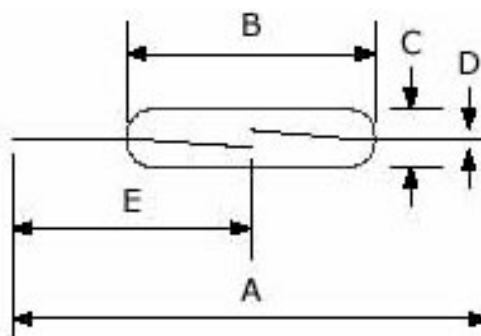
Operating Characteristics

Operate time max. (incl. bounce)	ms	5.0
Release time max.	ms	0.5
Switching frequency max.	Hz	185
Resonate frequency max.	Hz	900
Vibration (50-2000 Hz)	g	35
Shock (1 / 2 sin 11 ms)	g	50
Operating temperature	°C	-40 to +200

Dimensions

A = Total length nom.	83.40
B = Glass length max.	50.80
C = Glass diameter max.	5.20
D = Wire diameter nom.	0.6x2.4
E = Gap location	41.70

in mm



Technokey Company Ltd.

Unit 6-8, 26/F, Yen Sheng Centre,
64 Hoi Yuen Road,
Kwun Tong, Kln, Hong Kong.
Web Site: <http://technokey.com>

Tel: (852) 2950 9818
Fax: (852) 2950 0561
Tel: 021-6443 9350, 6404 8811 (Sh)
E-mail: enquiry@technokey.com