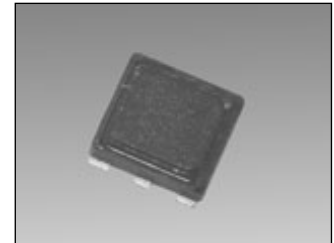


For Wireless LAN

SAW FILTER FOR 5GHz WIRELESS LAN

■ Features

- Compactness and light weight
- Small plastic package
- Excellent group delay characteristics
- Low insertion loss



■ Specification

Item		Model	WF682A	
			Specification	Typ.
Nominal frequency (MHz)			570	570
1dB passband width (MHz)			±8.5 min	-9.45 +10.10
Amplitude ripple (dB)	within ±8.5 MHz		1 max	0.76
Insertion loss (Fixed loss) (dB)			3 max	1.5
Guaranteed attenuation bandwidth (dB)	at -(200 ~ 22) MHz		23 min	27.9
	at -(22 ~ 17) MHz		15 min	19.6
	at -(17 ~ 15) MHz		5 min	17.7
	at +(15 ~ 17) MHz		5 min	8.3
	at +(17 ~ 22) MHz		10 min	14.5
	at +(22 ~ 200) MHz		26 min	28.7
Delay ripple (within ±8.5 MHz)			60 nsec max	24 nsec
Terminating impedance	Input (Ω)		50 (unbalance)	
	Output (Ω)		50 (unbalance)	
Operating impedance (°C)			-20 ~ +75	

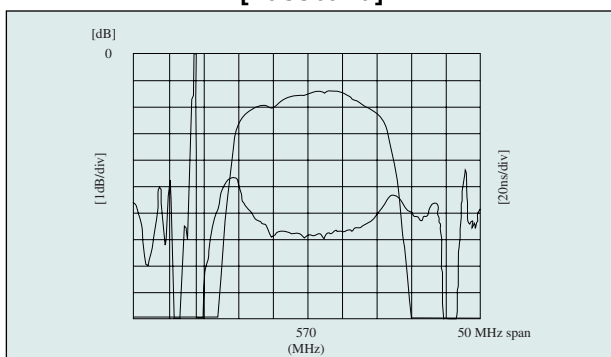
■ Dimensions

(mm)

PAD No.	CONNECTION
①, ④	INPUT/ OUTPUT
others	GND

■ Filter characteristics (example)

[Passband]



[Outband]

