

For Mobile Communication System

SURFACE MOUNT TYPE MCF

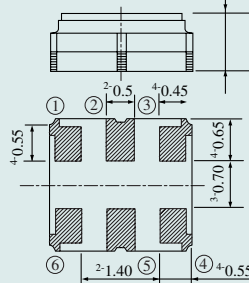
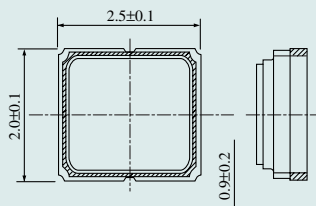
■ Features

- Ultra-compact (2.5 × 2.0 mm), Super-thin (0.9 mm typ.) & Lightweight (0.016 g)
- IR reflow, VPS are applicable. (Please check with us about temperature profile)
- For surface mount (Emboss carries taping applicable)
- Excellent shock resistance
- Excellent heat resistance
- Good guaranteed attenuation

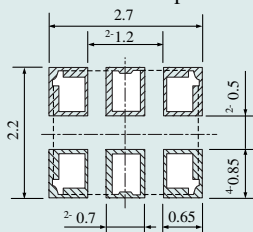
Model	130VC30A
Pole	2
Nominal Frequency	130.05MHz
3dB Pass Bandwidth	±15kHz min
Ripple	1.0dB max
Insertion Loss	4dB max (minimum loss)
Guaranteed Attenuation	F ₀ -910kHz 70dB min
Spurious	10dB min
Terminating Impedance	200Ω±5%/1.7pF±0.3pF
Operating Temp. Range	-20~+70°C
Type	NM2520SA



NM2520SA (mm)



Reference footprint



PAD No	PAD CONNECTION
①	GND
②	GND
③	OUT PUT
④	GND
⑤	GND
⑥	IN PUT

