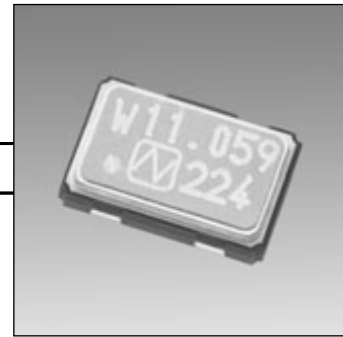


# CRYSTAL CLOCK OSCILLATORS

## Programmable Type

### 2775W SERIES



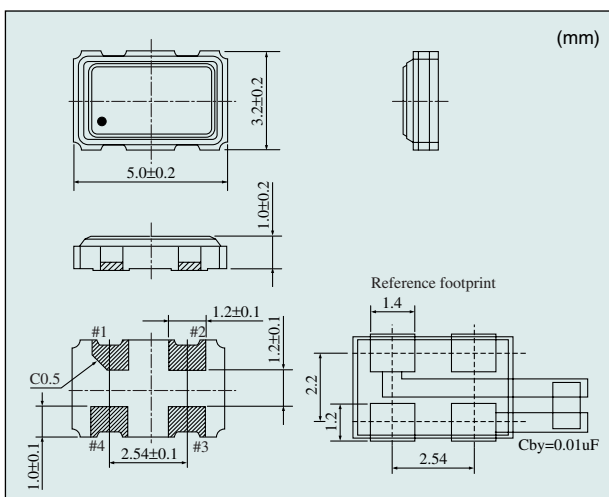
#### ■ Features

- Supply voltage 5.0V.
- Directly drives C-MOS IC.
- The PLL technology enables this series to cover the frequency range from 1 to 125MHz.
- The frequency writing technology makes quick delivery possible.
- Height compatible with slim IC package (TSSOP, TVSOP). (5.0×3.2×1.0mm)
- Half the area and 1/3 the volume of 2500 Series package.
- Ultra light weight (0.06g).
- The best choice for portable PC, PDA and PC card.
- Current Consumption in stand-by state is 50μA or less.
- Embossed carrier tape and IR reflow (lead-free) are possible.

■ **Absolute Maximum Rating**  
**Supply Voltage (V<sub>DD</sub>)** -0.5~+7.0V DC  
**Storage Temperature Range** -40~+85°C

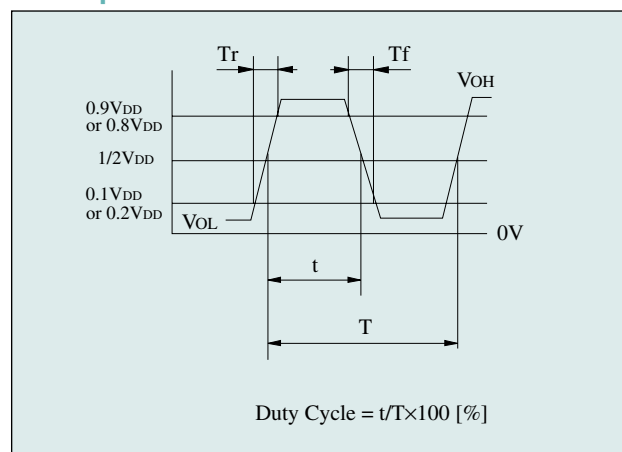
Item	Model	2775W		
Output Level		C-MOS		
Frequency Range	(MHz)	1≤F≤40	40<F≤70	70<F≤125
Frequency Stability /Operating Temp. Range	(×10 <sup>-6</sup> )/(°C)	±100/-20~+70 (Standard Model), ±50/-10~+70		
Supply Voltage (V <sub>DD</sub> )	(V)	+5±10%		
Current Consumption (+5V, at 25°C)		25mA (max)	40mA (max)	50mA (max)
	stand-by	50μA (max)		
V <sub>OL</sub> max / V <sub>OH</sub> min	(V)	0.1V <sub>DD</sub> /0.9V <sub>DD</sub> I <sub>OL</sub> =8mA, I <sub>OH</sub> =-8mA		
Tr max/Tf max	(ns)	5/5 (0.1V <sub>DD</sub> ~0.9V <sub>DD</sub> )		3/3 (0.2V <sub>DD</sub> ~0.8V <sub>DD</sub> )
Duty Cycle	(%)	45~55 (at 1/2V <sub>DD</sub> )		40~60 (at 1/2V <sub>DD</sub> )
Fanout (gate)	CL (pF)	15		
Stand-by Function	Tri-state	Yes		

#### ■ 2775W Series Outline



PAD No.	Connection
# 1	STAND-BY
# 2	GND
# 3	OUTPUT
# 4	V <sub>DD</sub>

#### ■ Output Wave <C-MOS>



#### ■ Stand-by Function <Tri-state>

# 1 input	# 3 output
H level (+2 V <sub>DD</sub> min) or open	Operating
L level (+0.8 V <sub>DD</sub> max)	High impedance (Weak pull down)