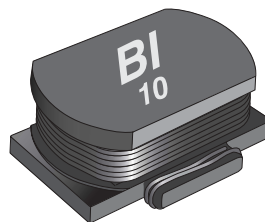


MODEL HM61 SERIES

Low Cost Miniature Surface Mount Inductors

NEW PRODUCT



FEATURES AND BENEFITS

- Low DC resistance, high current carrying capability
- Class H design for elevated ambient temperature
- Operating frequency up to 2 MHz
- Wide Inductance range of 1 μ H to 2700 μ H
- Up to 4 amps continuous
- Suitable for automatic insertion
- Compatible with vapor phase and IR reflow soldering

APPLICATIONS

- Radio interference suppression
- Decoupling in RF and IF circuits
- DC-DC converters
- Safety devices in automotive electronics

ELECTRICAL / ENVIRONMENTAL

Operating Temperature Range	-40°C to +180°C
Storage Temperature Range	-40°C to +125°C
Ambient Temperature, Maximum	125°C
Insulation System	Class H, 180°C

Specifications subject to change without notice.
Last Update: 03/17/2003.

6

SPECIFICATIONS

Part Number	Inductance $\mu\text{H} \pm 20\%$ ⁽¹⁾	DC Resistance Ω Typ. ⁽²⁾	Self-Resonating Frequency (SRF) MHz Typ.	Rated Current Amps ⁽³⁾	Marking Code	Figure
HM61-101R0	1	0.015	120	4	01	1
HM61-101R5	1.5	0.021	60	3.3	02	1
HM61-102R2	2.2	0.028	56	2.5	03	1
HM61-103R3	3.3	0.040	38	2.2	04	1
HM61-10100	10	0.120	30	1.3	05	1
HM61-10220	22	0.260	20	0.8	06	1
HM61-10470	47	0.500	12	0.6	07	1
HM61-10101	100	1.000	7	0.4	08	1
HM61-10221	220	2.200	3.5	0.27	09	1
HM61-10471	470	5.000	2.2	0.18	10	1
HM61-20100	10	0.065	25	2.70	11	2
HM61-20120	12	0.07	22	2.50	12	2
HM61-20150	15	0.09	20	2.20	13	2
HM61-20180	18	0.1	16	2.00	14	2
HM61-20220	22	0.11	15	1.80	15	2
HM61-20270	27	0.13	14	1.60	16	2
HM61-20330	33	0.15	13	1.50	17	2
HM61-20390	39	0.18	12	1.30	18	2
HM61-20470	47	0.2	11	1.20	19	2
HM61-20560	56	0.25	9	1.10	20	2
HM61-20680	68	0.28	8	1.00	21	2
HM61-20820	82	0.35	7.5	0.90	22	2
HM61-20101	100	0.45	7	0.84	23	2
HM61-20121	120	0.5	6.5	0.77	24	2
HM61-20151	150	0.65	6.2	0.69	25	2
HM61-20181	180	0.75	6	0.62	26	2
HM61-20221	220	0.95	5.2	0.57	27	2
HM61-20271	270	1.1	4.5	0.51	28	2
HM61-20331	330	1.35	4	0.46	29	2
HM61-20391	390	1.6	3.5	0.43	30	2
HM61-20471	470	2	2.8	0.39	31	2
HM61-20561	560	2.4	2.7	0.36	32	2
HM61-20681	680	2.7	2.6	0.32	33	2
HM61-20821	820	3.6	1.7	0.30	34	2
HM61-20102	1000	4.3	1.6	0.27	35	2
HM61-20122	1200	5.6	1.5	0.25	36	2
HM61-20152	1500	6.5	1.45	0.22	37	2
HM61-20182	1800	7	1.4	0.20	38	2
HM61-20222	2200	9.2	1.3	0.18	39	2
HM61-20272	2700	10.5	1.2	0.16	40	2

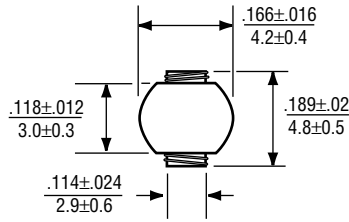
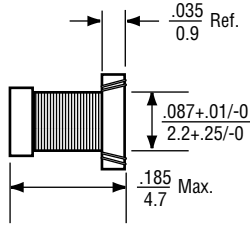
Notes: 1. Inductance measured at 1.0kHz, 0.1V, no DC current.

2. DC resistance measured at 20°C.

3. Rated current is the maximum DC current at which inductance will be decreased by 10% from its initial (zero DC) value or the current at which $\Delta T = 40^\circ\text{C}$, whichever is lower.

OUTLINE DIMENSIONS (Inch/mm)

Figure 1



Recommended Solder Pad Layout

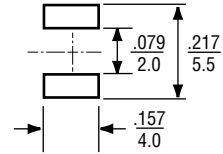
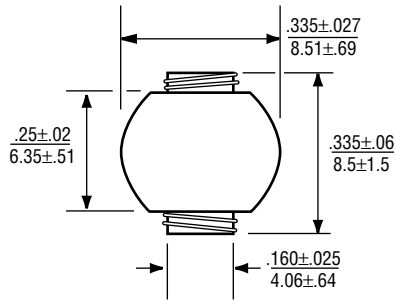
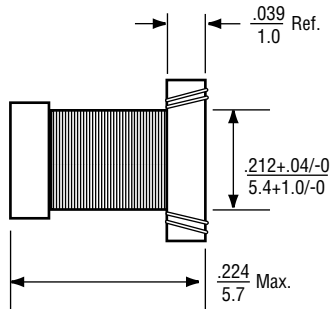
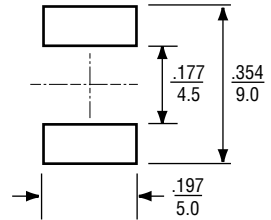


Figure 2



Recommended Solder Pad Layout



PACKAGING

Standard: Embossed Tape & Reel

Reel Diameter:	Figure 1	=	7" (177.8mm)
	Figure 2	=	13" (330.2mm)
Capacity:	Figure 1	=	300 Units
	Figure 2	=	750 Units

ORDERING INFORMATION

