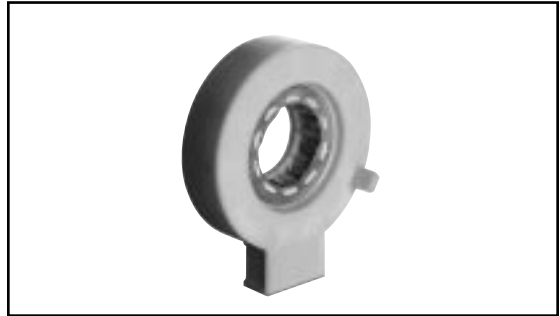


AUTOMOTIVE STEERING POSITION SENSOR



BI Technologies steering sensors provide high accuracy in challenging environments and are designed for today's high performance Electronic Steering Systems to provide critical position information. Dual redundant outputs provide added reliability and system diagnostic options. BI's expertise in innovative sensor packaging is a key element in the development of solutions for custom applications.

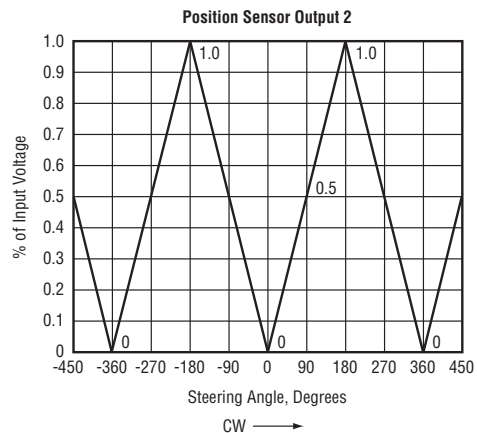
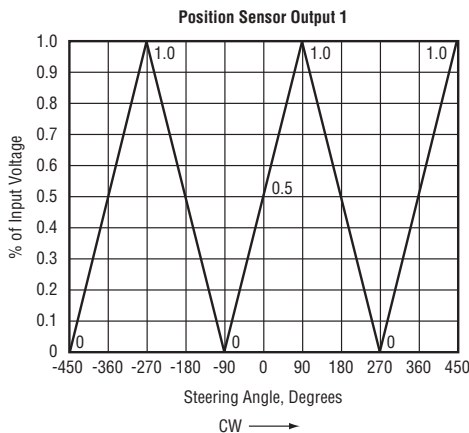
APPLICATIONS

- Active suspension systems
- Electric power assist steering
- Through hole position sensing
- Traction control

FEATURES & BENEFITS

- Dual output position sensor
- Gripping torque feature
- Low friction
- Continuous rotation

PERFORMANCE



Specifications subject to change without notice.

ELECTRICAL

| | |
|--|--------------------------|
| Operating Voltage, Maximum | 16 V |
| Accuracy: Position Output | ±1.5% Absolute Linearity |
| Dielectric Withstanding Voltage, Maximum | 500 Vdc |

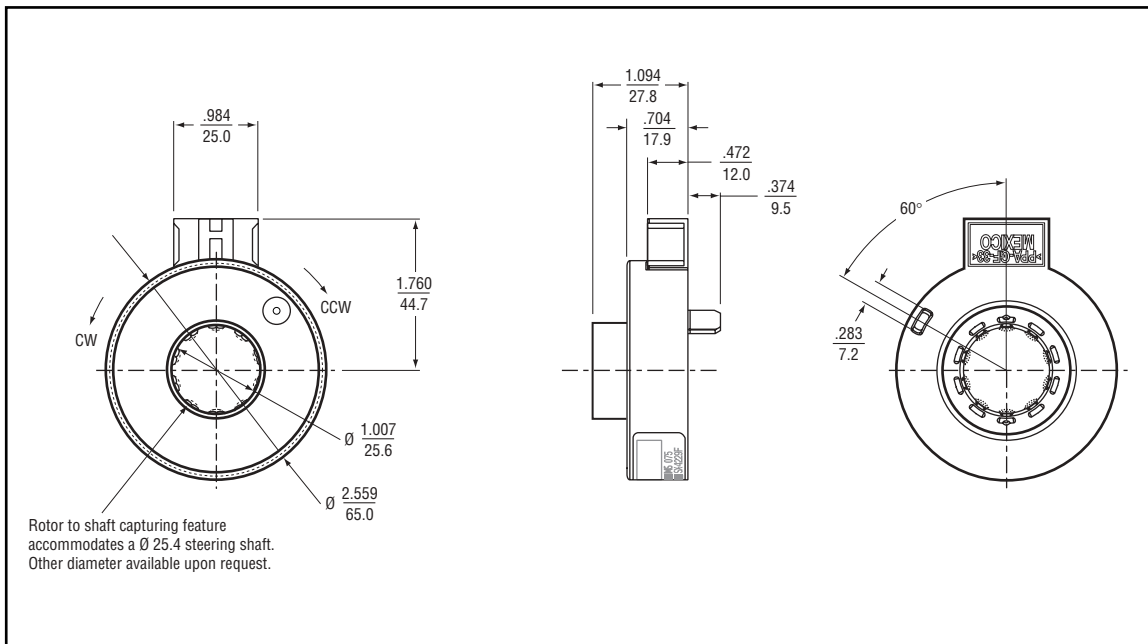
MECHANICAL

| | |
|---------------------|-----|
| Hysteresis, Maximum | 1% |
| Grip Force | 8kg |

ENVIRONMENTAL

| | |
|------------------------------------|---------------------|
| Operating Temperature Range | -40°C to +85°C |
| Shock, Maximum | 10G's |
| Vibration | 10G's |
| Dust Exposure | 8 hours to SAE J726 |
| Dither Life | 75 mil. strokes |
| Rotational Life @ 300 RPM, Maximum | 1 mil. rotations |

OUTLINE DIMENSIONS (Inch/mm)



CONTACT BI

For assistance with your application or price and delivery information contact BI Technologies product marketing at 714/447-2757 or by fax: 714/447-2400 or by email: sales@bitechnologies.com