

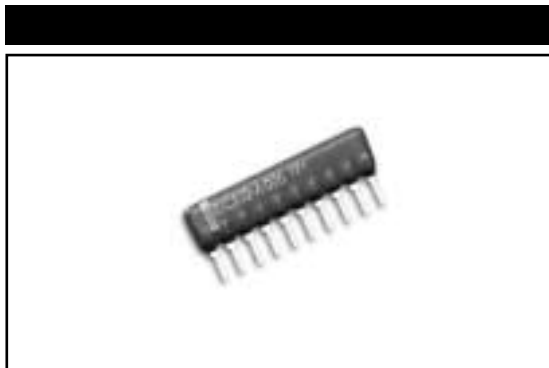
# MODEL CR SERIES

## Single-In-Line

### Conformal Coated

### Resistor/Capacitor

### Networks



#### FEATURES

- 4 to 14 Leads
- Standard and custom circuits
- Space saving design

#### ELECTRICAL (CAPACITOR)

Rated Voltage	25Vdc, 50Vdc, 100Vdc			
Capacitance Range	10pF to 470,000pF (Custom 2.2pF to 10pF max.)			
Tolerance	J Tol. ±5%	K Tol. ±10%	M Tol. ±20%	Z Tol. +80% to -20%
Temperature Coefficient (% of Change)	Refer to Dielectric Table			
Operating Temperature Range	<b>CG, SL &amp; X7R:</b> -55°C to +125°C <b>Y5V:</b> -30°C to +85°C			

#### ELECTRICAL (RESISTOR)

Power Dissipation, Watts, at 70°C	1/8 to 1/4 per resistor		
Operating Voltage, Maximum	100Vdc		
Standard Resistance Range, Ohms	10 to 2.2 Meg		
Standard Resistance Tolerance	G. Tol. ±2%	J Tol. ±5%	K Tol. ±10%
Temperature Coefficient of Resistance	100 to 300ppm/°C		
Operating Temperature Range	-55°C to +125°C		

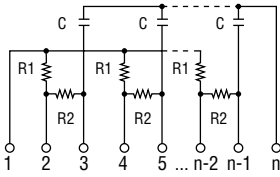
#### DIELECTRIC TABLE

Dielectric	Code	Characteristics	Values
SL	S	+350/-1,000/°C	10pF to 3,300pF
X7R	X	±15% (-55 to +125°C)	680pF to 47nF
Y5V	Y	+22% to -82% (-30 to +85°C)	10pF to 1,500pF
CG (NPO)	CG	±30ppm/°C	10pF to 1,500pF

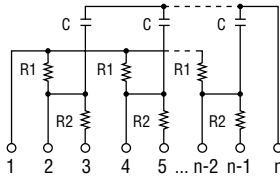
Specifications subject to change without notice.

**SCHEMATICS**

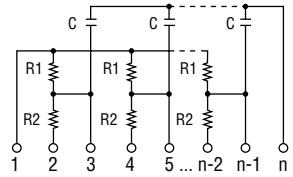
**-A Circuit**



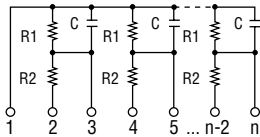
**-B Circuit**



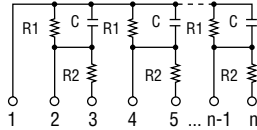
**-C Circuit**



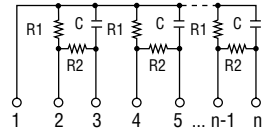
**-G Circuit**



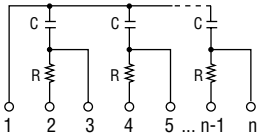
**-H Circuit**



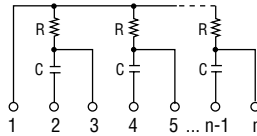
**-I Circuit**



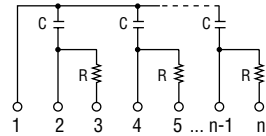
**-K Circuit**



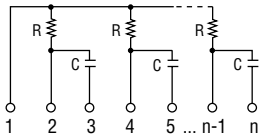
**-L Circuit**



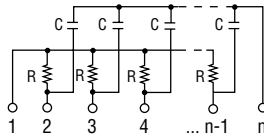
**-M Circuit**



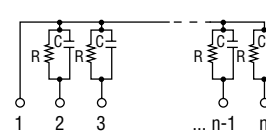
**-N Circuit**



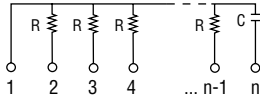
**-S Circuit**



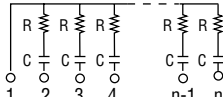
**-T Circuit**



**-U Circuit**

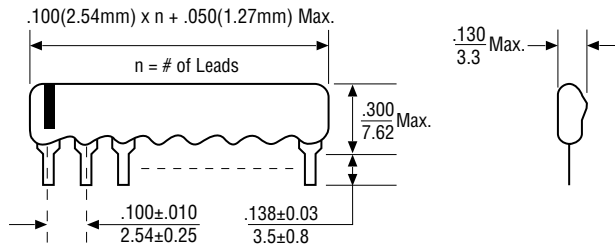


**-1 Circuit**

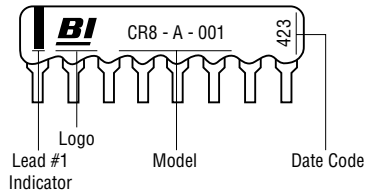


**Note: Custom circuits are available. Consult factory.**

## OUTLINE DIMENSIONS (Inch/mm)

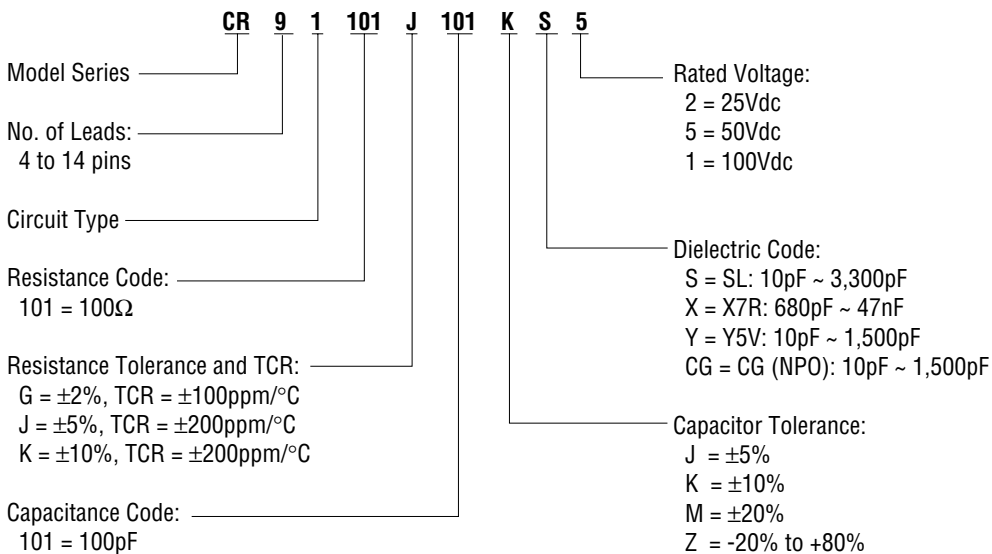


## TYPICAL PART MARKING



**ORDERING INFORMATION**

**Circuit 1**



**Custom Circuits A to U**

